

Schedule

- Presentation of UURI results (30-35 minutes)
 - ▶ RI Results (Phase III UURI and brief review of Phase I and II RI)
 - ▶ Risk Assessment Results
 - ▶ Introduce the LOOW Management Action Plan
- **Presentation and Update on Niagara Falls Storage Site (NFSS) (10 minutes)**
- Poster breakout session (30 minutes)
 - ▶ Station 1 – General information and Management Action Plan parcel grouping and methodology
 - ▶ Station 2 – UURI Report available for review
 - ▶ Station 3 – Summary of risk assessment results from selected exposure units
 - ▶ Station 4 – U.S. Department of Energy
- Round Table Discussion (1 hour and 30 minutes)



BUILDING STRONG®

Slide 1

LOOW Underground Utilities Radiological Investigation

- On the NFSS, radiological contamination exists within former LOOW Underground Utility Lines
(Source: NFSS Remedial Investigation Report, December 2007)
- Samples for radiological analysis taken in tandem with LOOW Underground Utility RI sampling between Aug & Oct 2006 to determine the potential for off-site migration
- 60 samples were collected – including sludge and wastewater within the pipes as well as soil underneath
- Each sample, at a minimum, analyzed for uranium, thorium, and radium
- Fact sheet and data released October 2007
- Samples compared to background as established in the NFSS RI Report



BUILDING STRONG®

Slide 2

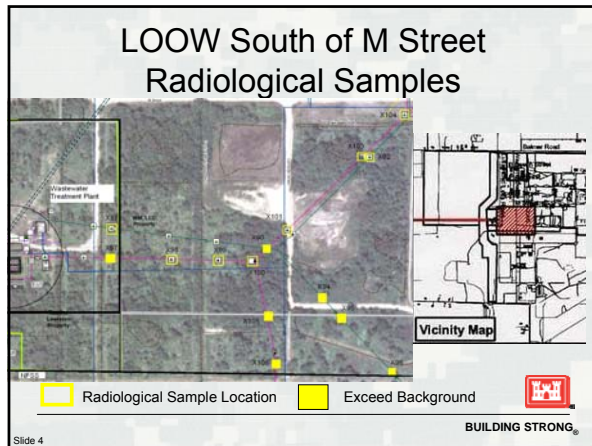
Radiological Underground Utilities Investigation Conclusions

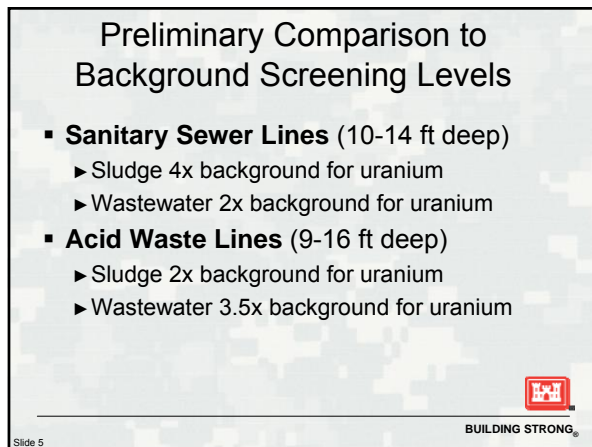
- No imminent threat to human health or the environment
- Bedding material will not encourage potential contaminant movement along subsurface pipelines
- Further evaluation of radiological impacts in the RI Report Addendum

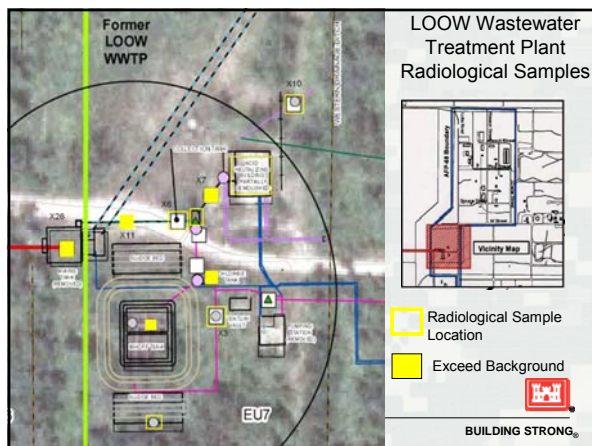


BUILDING STRONG®

Slide 3







Preliminary Comparison to Background Screening Levels

▪ Wastewater Treatment Plant

► Sludge in the lines (1-6 ft deep)

- radium 2x background
- thorium 1.25x background
- uranium 1.5x background
- cesium 1.5x background

► Sludge in Imhoff tank

- cesium 3x background
- uranium 10x background

► Sludge in the chlorination tank

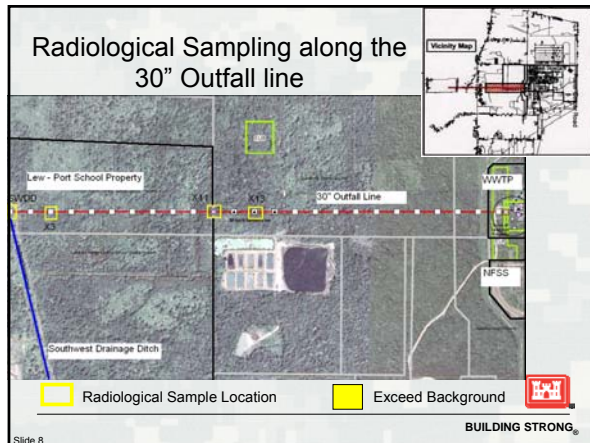
- uranium 7x background
- radium 1.5x background



Slide 7

BUILDING STRONG®

Radiological Sampling along the 30" Outfall line



Slide 8

BUILDING STRONG®

Preliminary Comparison to Background Screening Levels

▪ 30" Outfall Line (5-6 ft deep)

- Very limited presence of sludge and wastewater
- Available wastewater within background limits
- Soil surrounding 30" Outfall line within background limits

▪ Southwest Drainage Ditch

- No background exceedances



Slide 9

BUILDING STRONG®

Next Steps for NFSS

- Continued site operations and maintenance, environmental monitoring, and annual reporting
- NFSS RI Report Addendum fieldwork this Fall/Winter 2009
- Feasibility Study Work Plan



BUILDING STRONG®

Slide 10

Access to Information

- The Fact sheet for the LOOW UURI Radiological Sampling is available at:

<http://www.lrb.usace.army.mil/derpfuds/loow-nfss/index.htm>

- The fact sheet for the RI Report Addendum is available at:

<http://www.lrb.usace.army.mil/fusrap/nfss/index.htm>



BUILDING STRONG®

Slide 11

Contact Us

US Army Corps of Engineers
Buffalo District – FUSRAP Team
1776 Niagara Street
Buffalo, NY 14207
fusrap@usace.army.mil
1-800-833-6390 (Option 4)



BUILDING STRONG®

Slide 12
